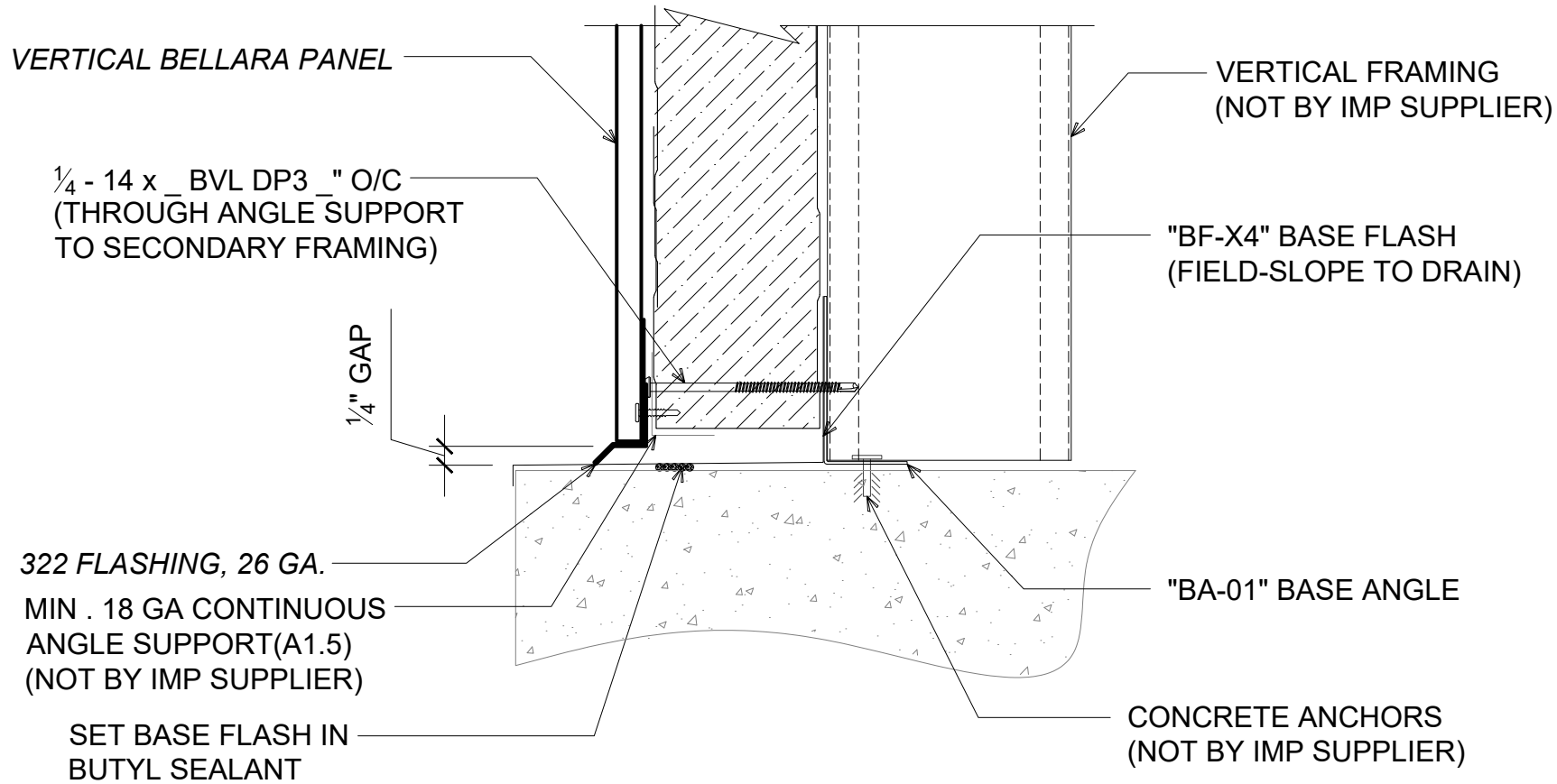


NOTE: REFER TO AWIP BELLARA DESIGN GUIDE FOR INSTALLATION OF BELLARA PROFILES.



FLUSH / FINISH FLOOR BASE

(SECTION VIEW)

DETAIL:
FLUSH / FINISH FLOOR BASE

APPLICATION:
FASADE: HORIZONTAL IMP, VERTICAL BELLARA
AWIP DETAIL NUMBER:
FAS-ACL-BC-010

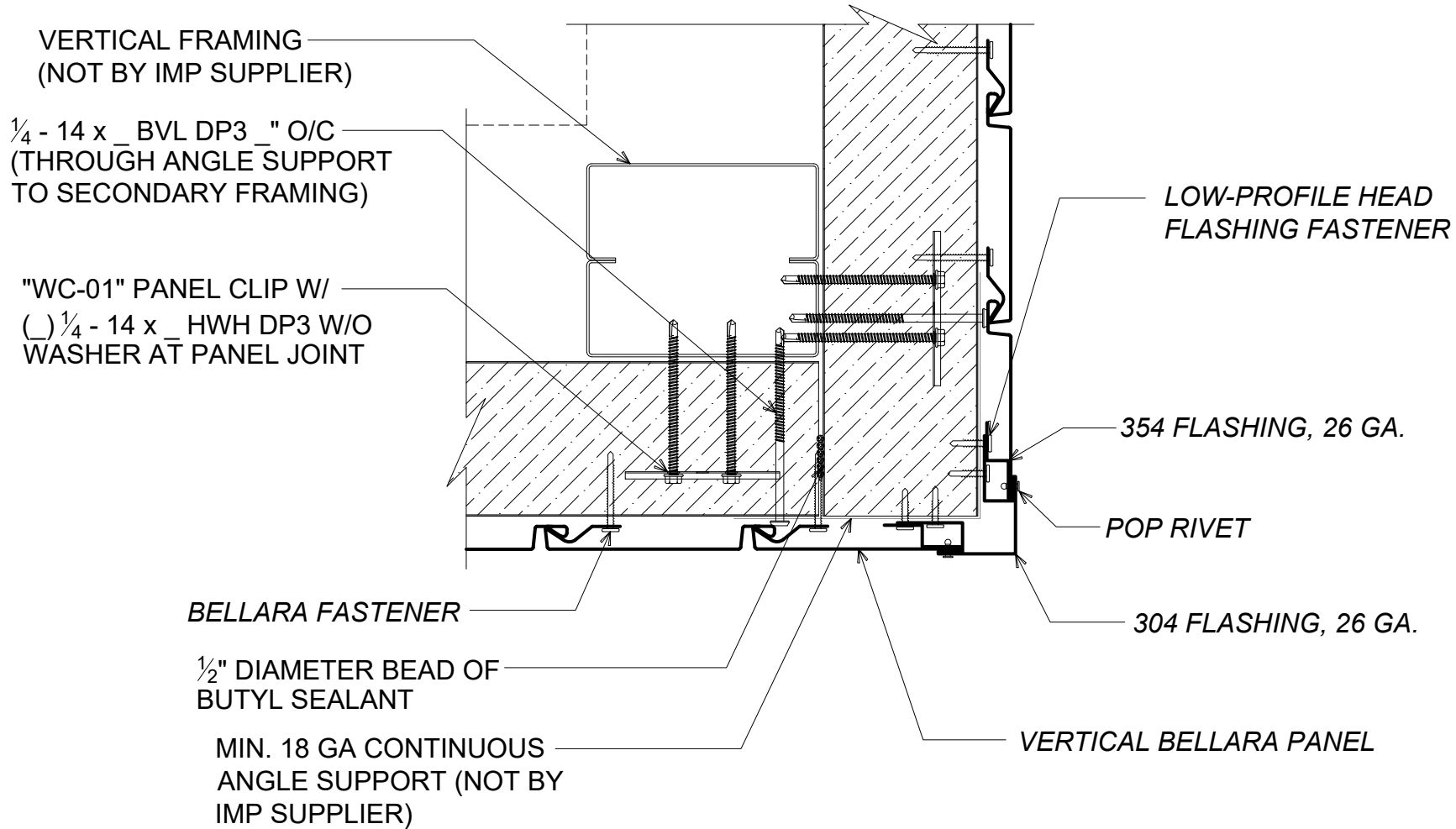
929 ALDRIDGE ROAD
VACAVILLE, CA 95688
TEL: (707) 359-2280
FAX: (707) 359-2286
WWW.AWIPANELS.COM

All Weather
Insulated Panels



SHEET:
DATE: 10/03/24
DRAWN BY: JB/MMF
1 OF 1

NOTE: REFER TO AWIP BELLARA DESIGN GUIDE FOR INSTALLATION OF BELLARA PROFILES.



CORNER TRANSITION - OUTSIDE

(PLAN VIEW)

DETAIL: CORNER TRANSITION - OUTSIDE

APPLICATION:
FASFADE: HORIZONTAL IMP. VERTICAL BELLARA
AWIP DETAIL NUMBER:
FAS-ACL-OC-010

929 ALDRIDGE ROAD
VACAVILLE, CA 95688
TEL: (707) 359-2280
FAX: (707) 359-2286
WWW.AWIPANELS.COM

All Weather
Insulated Panels



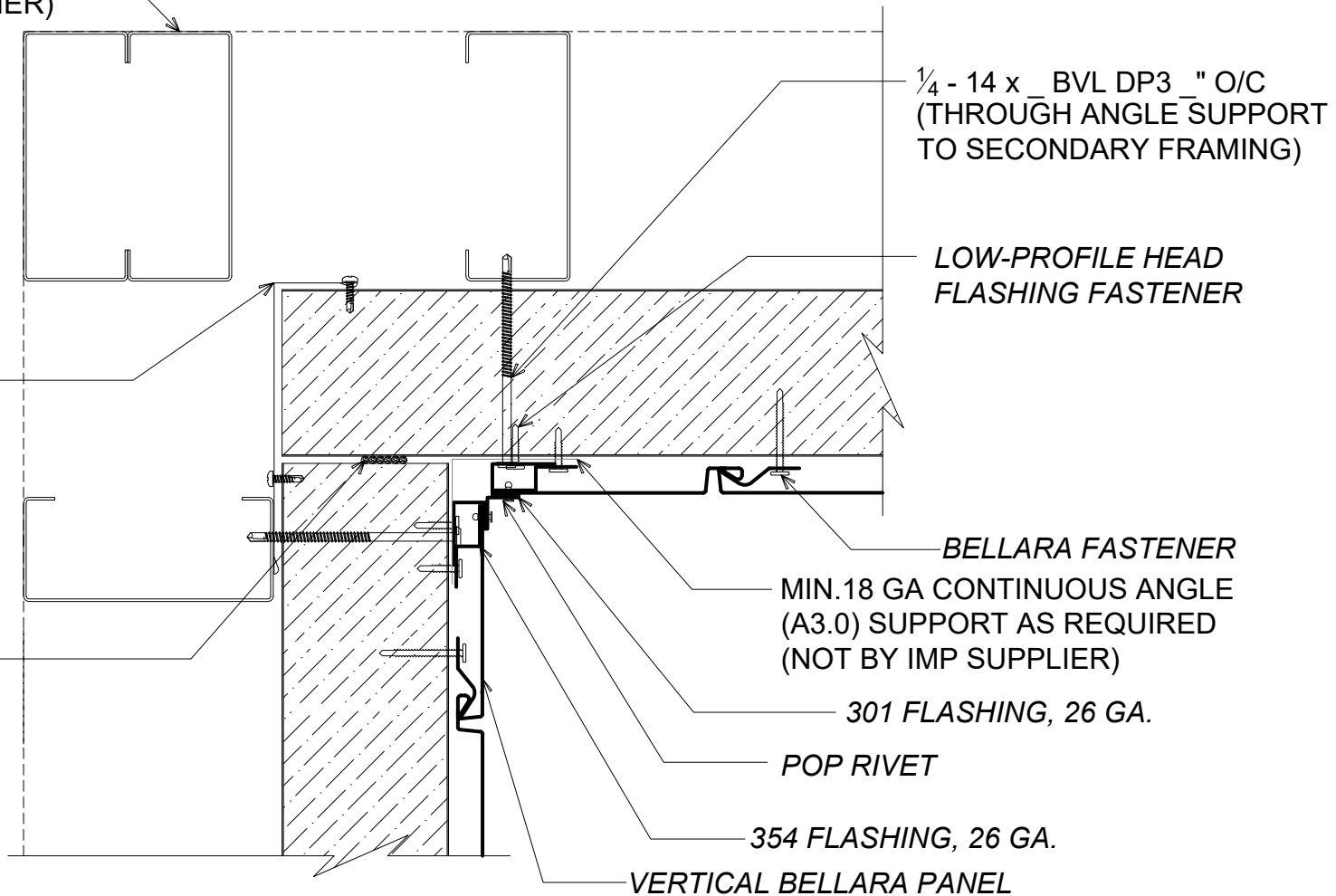
SHEET:
DATE: 10/03/24
DRAWN BY: JB/MMF
1 OF 1

NOTE: REFER TO AWIP BELLARA DESIGN GUIDE FOR INSTALLATION OF BELLARA PROFILES.

VERTICAL FRAMING
(NOT BY IMP SUPPLIER)

"OC-02" OUTSIDE
CORNER W/ #10 x
3/4" PPH 12" O/C

1/2" DIAMETER BEAD
OF BUTYL SEALANT



CORNER TRANSITION - INSIDE

(PLAN VIEW)

DETAIL:

CORNER TRANSITION - INSIDE

APPLICATION:

FASSADE: HORIZONTAL IMP. VERTICAL BELLARA

AWIP DETAIL NUMBER:

FAS-ACH-C-010

929 ALDRIDGE ROAD
VACAVILLE, CA 95688
TEL: (707) 359-2280
FAX: (707) 359-2286
WWW.AWIPANELS.COM

All Weather
Insulated Panels



SHEET:

DATE:

10/03/24

DRAWN BY:

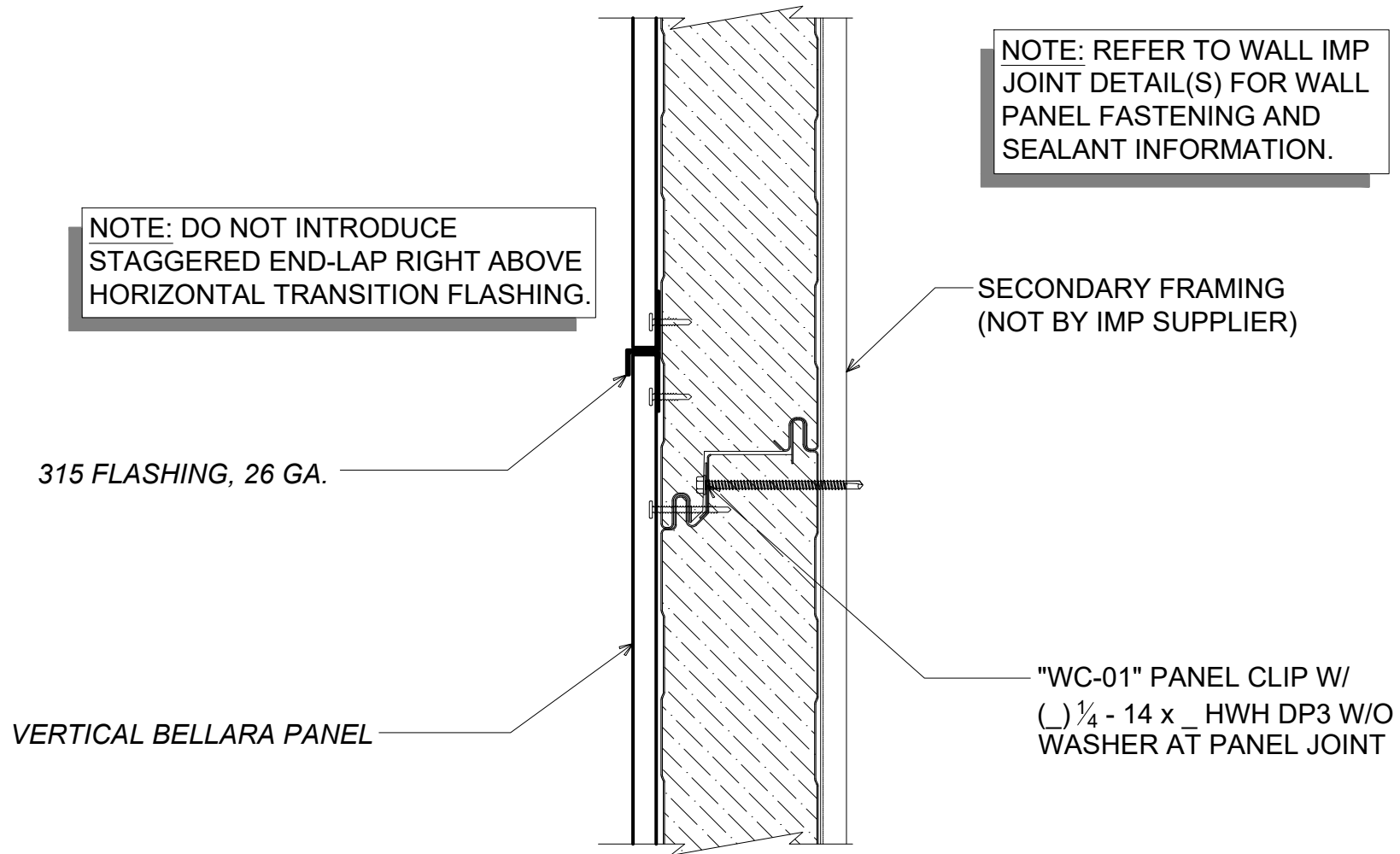
JB/MMF

1 OF 1

NOTE: REFER TO AWIP BELLARA DESIGN GUIDE FOR INSTALLATION OF BELLARA PROFILES.

NOTE: REFER TO WALL IMP JOINT DETAIL(S) FOR WALL PANEL FASTENING AND SEALANT INFORMATION.

NOTE: DO NOT INTRODUCE STAGGERED END-LAP RIGHT ABOVE HORIZONTAL TRANSITION FLASHING.



#

HORIZONTAL TRANSITION (BELLARA CLADDING)

(SECTION VIEW)

DETAIL:

HORIZONTAL TRANSITION

APPLICATION:
FACSADE: HORIZONTAL IMP, VERTICAL BELLARA
AWIP DETAIL NUMBER:
FAS-ACHPT-010

929 ALDRIDGE ROAD
VACAVILLE, CA 95688
TEL: (707) 359-2280
FAX: (707) 359-2286
WWW.AWIPANELS.COM

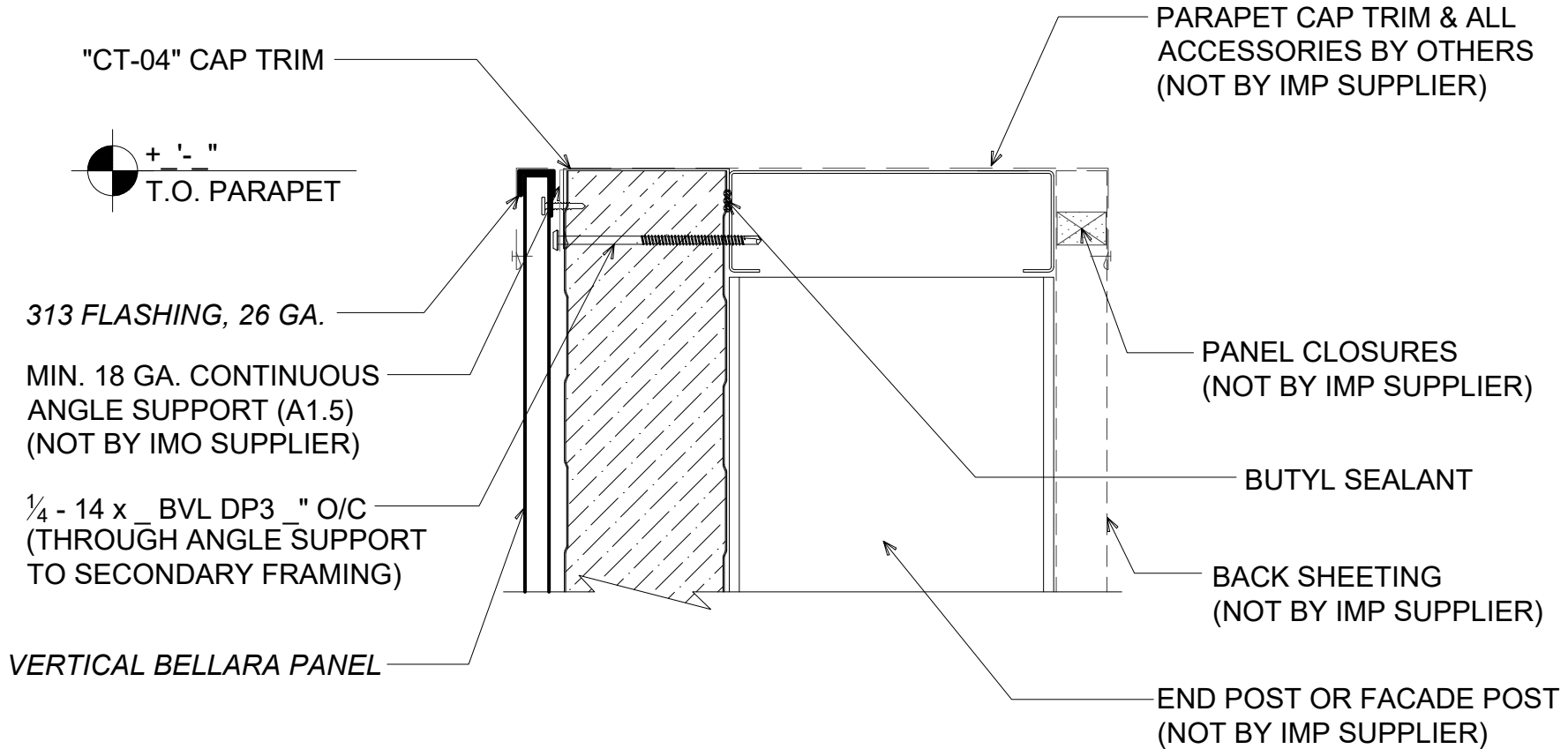
All Weather
Insulated Panels



DATE:
10/03/24
DRAWN BY:
JB/MMF

SHEET:
1 OF 1

NOTE: REFER TO AWIP BELLARA DESIGN GUIDE FOR INSTALLATION OF BELLARA PROFILES.



PARAPET WALL

(SECTION VIEW)

DETAIL:

PARAPET WALL

APPLICATION:
 FASSADE: HORIZONTAL IMP, VERTICAL BELLARA
 AWIP DETAIL NUMBER:
 FAS-ACI-PW-010

929 ALDRIDGE ROAD
 VACAVILLE, CA 95688
 TEL: (707) 359-2280
 FAX: (707) 359-2286
 WWW.AWIPANELS.COM

All Weather
 Insulated Panels



SHEET:

DATE:

10/03/24

DRAWN BY:

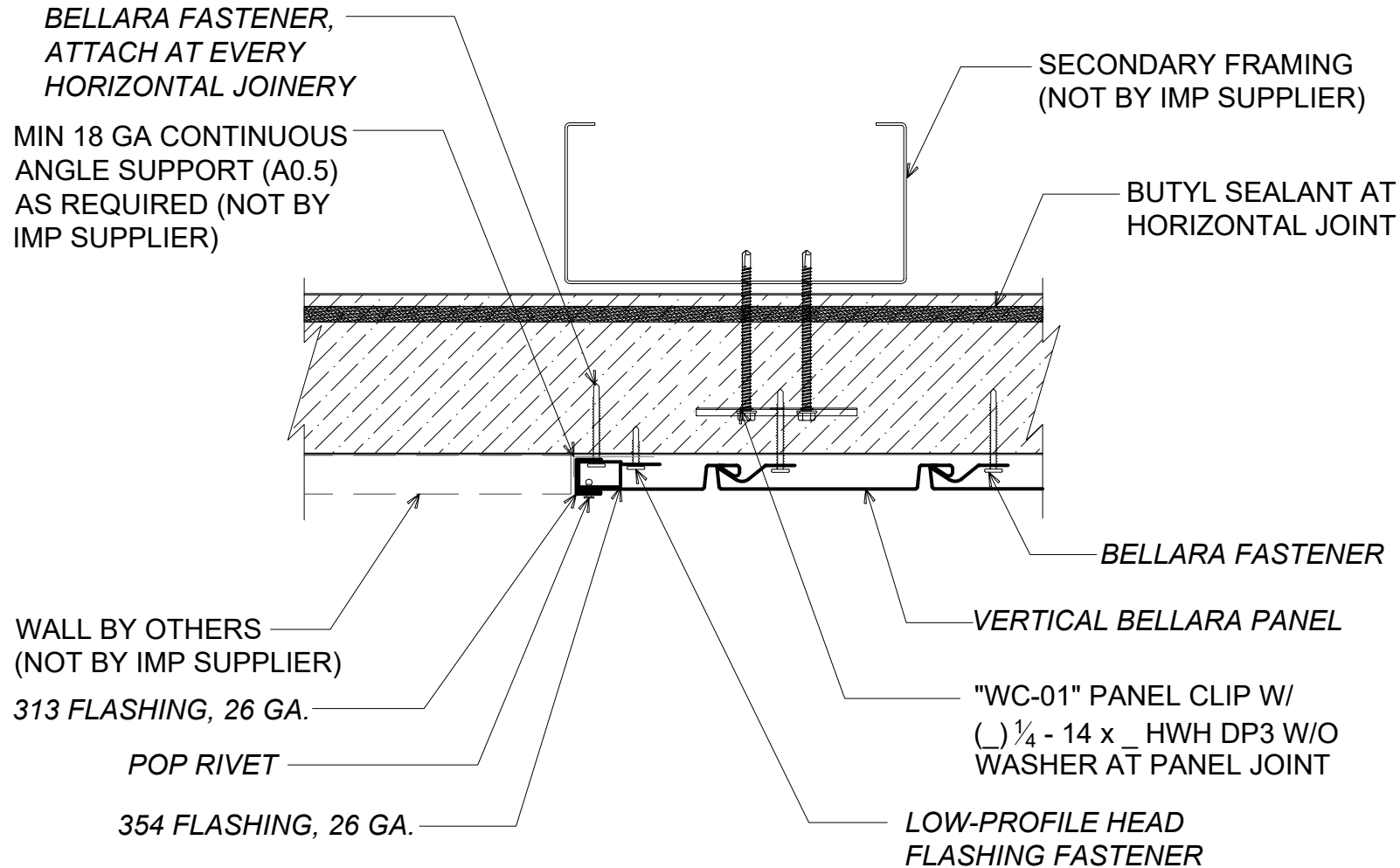
JB/MMF

OF 1

1

NOTE: FASTENING SCHEDULE MAY VARY
DEPENDING ON SPECIFIC APPLICATION.

NOTE: REFER TO AWIP BELLARA DESIGN GUIDE
FOR INSTALLATION OF BELLARA PROFILES.



TERMINATION (BELLARA CLADDING)

(PLAN VIEW)

DETAIL: TERMINATION

929 ALDRIDGE ROAD
VACAVILLE, CA 95688
TEL: (707) 359-2280
FAX: (707) 359-2286
WWW.AWIPANELS.COM

All Weather
Insulated Panels

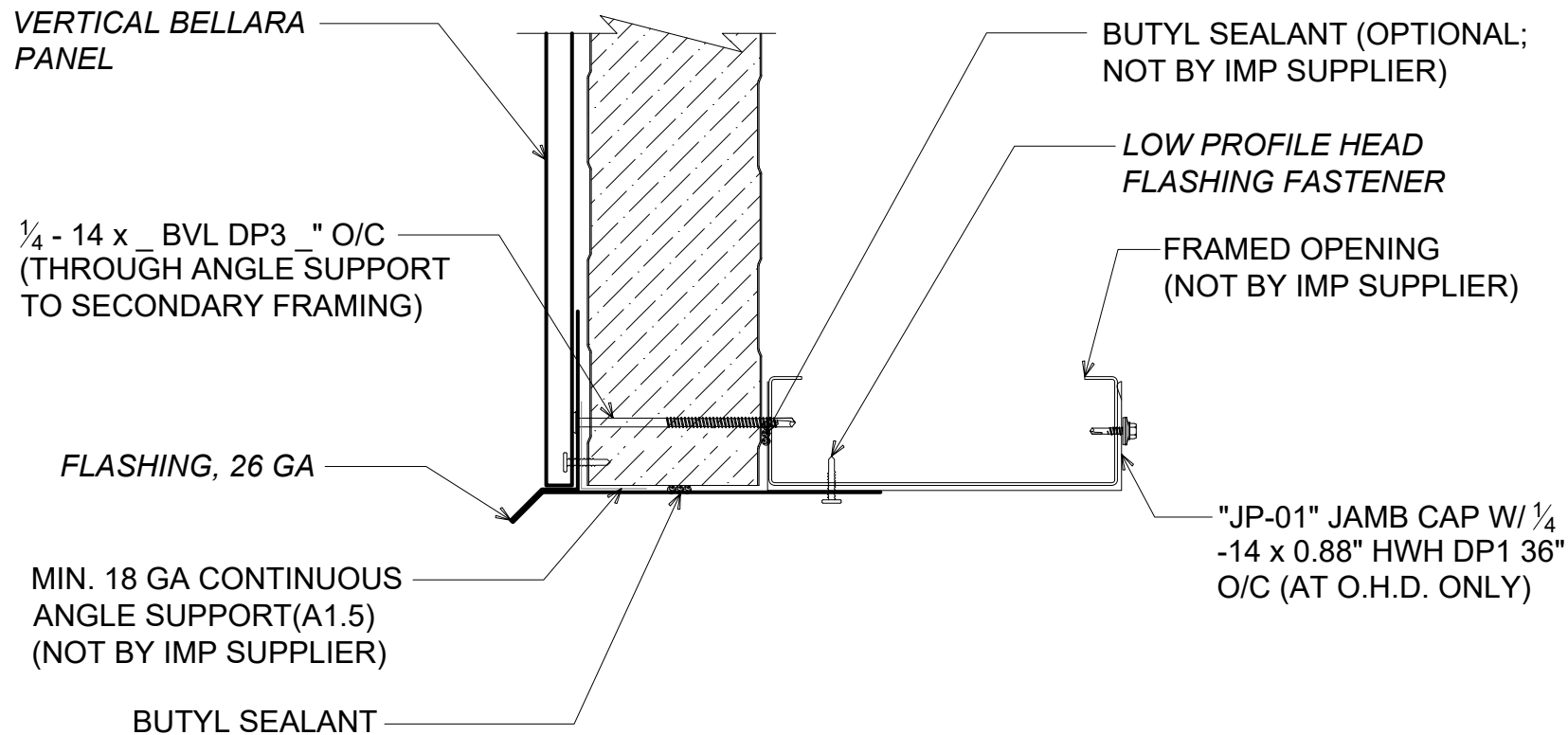


APPLICATION:
FACSADE: HORIZONTAL IMP, VERTICAL BELLARA
AWIP DETAIL NUMBER:
FAS-ACHPT-011

DATE: 10/03/24
DRAWN BY: JB/MMF

SHEET:
1 OF 1

NOTE: REFER TO AWIP BELLARA DESIGN GUIDE FOR INSTALLATION OF BELLARA PROFILES.



FRAMED OPENING - HEADER

(SECTION VIEW)

DETAIL:

FRAMED OPENING - HEADER

APPLICATION:
 FASSADE: HORIZONTAL IMP, VERTICAL BELLARA
 AWIP DETAIL NUMBER:
 FAS-ACL-FO-010

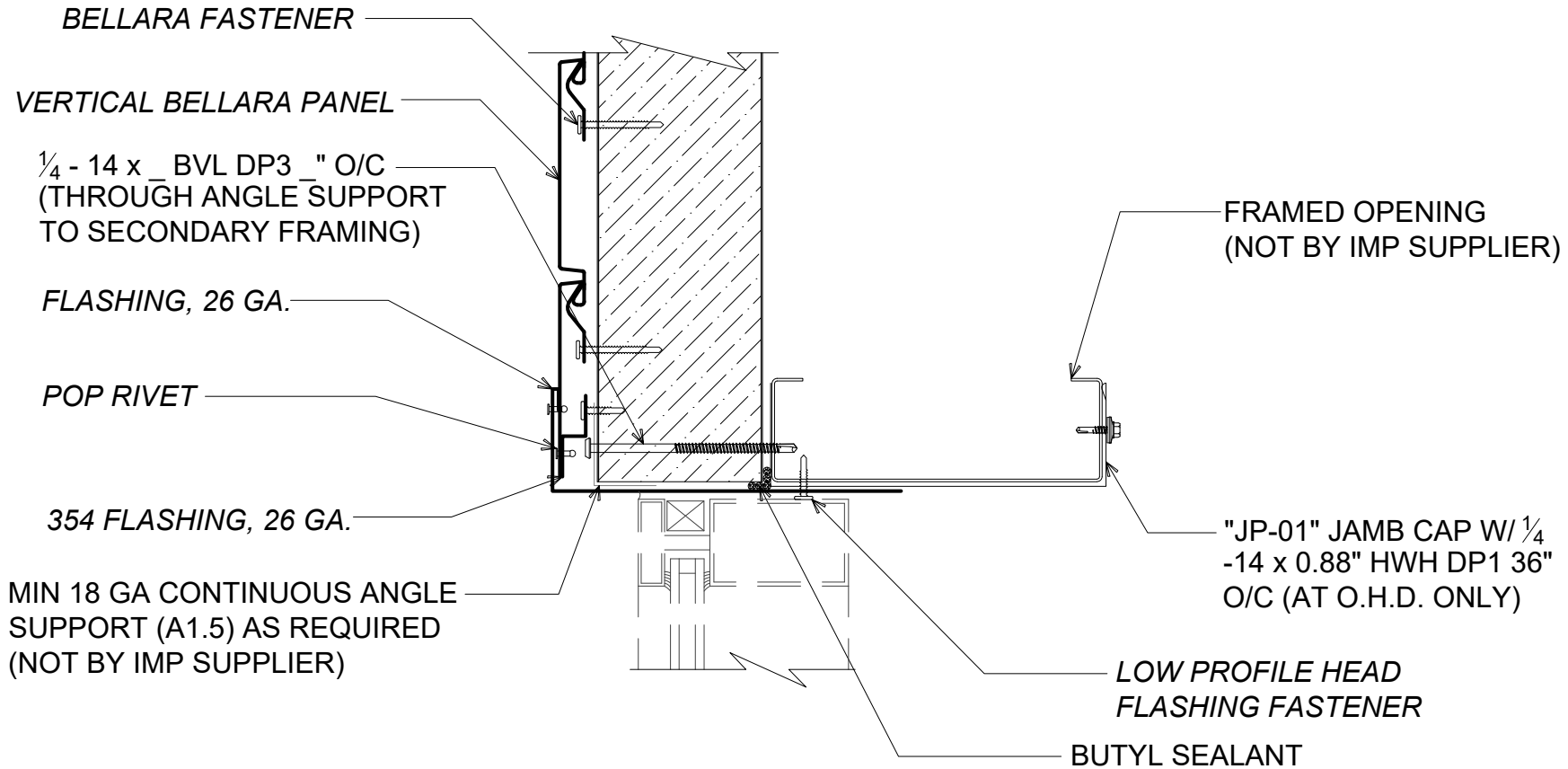
929 ALDRIDGE ROAD
 VACAVILLE, CA 95688
 TEL: (707) 359-2280
 FAX: (707) 359-2286
 WWW.AWIPANELS.COM



DATE: 10/03/24
 DRAWN BY: JB/MMF

SHEET: 1 OF 1

NOTE: REFER TO AWIP BELLARA DESIGN GUIDE FOR INSTALLATION OF BELLARA PROFILES.



FRAMED OPENING - JAMB

(PLAN VIEW)

DETAIL:

FRAMED OPENING - JAMB

APPLICATION:
 FASSADE: HORIZONTAL IMP, VERTICAL BELLARA
 AWIP DETAIL NUMBER:
 FAS-ACL-FO-011

929 ALDRIDGE ROAD
 VACAVILLE, CA 95688
 TEL: (707) 359-2280
 FAX: (707) 359-2286
 WWW.AWIPANELS.COM

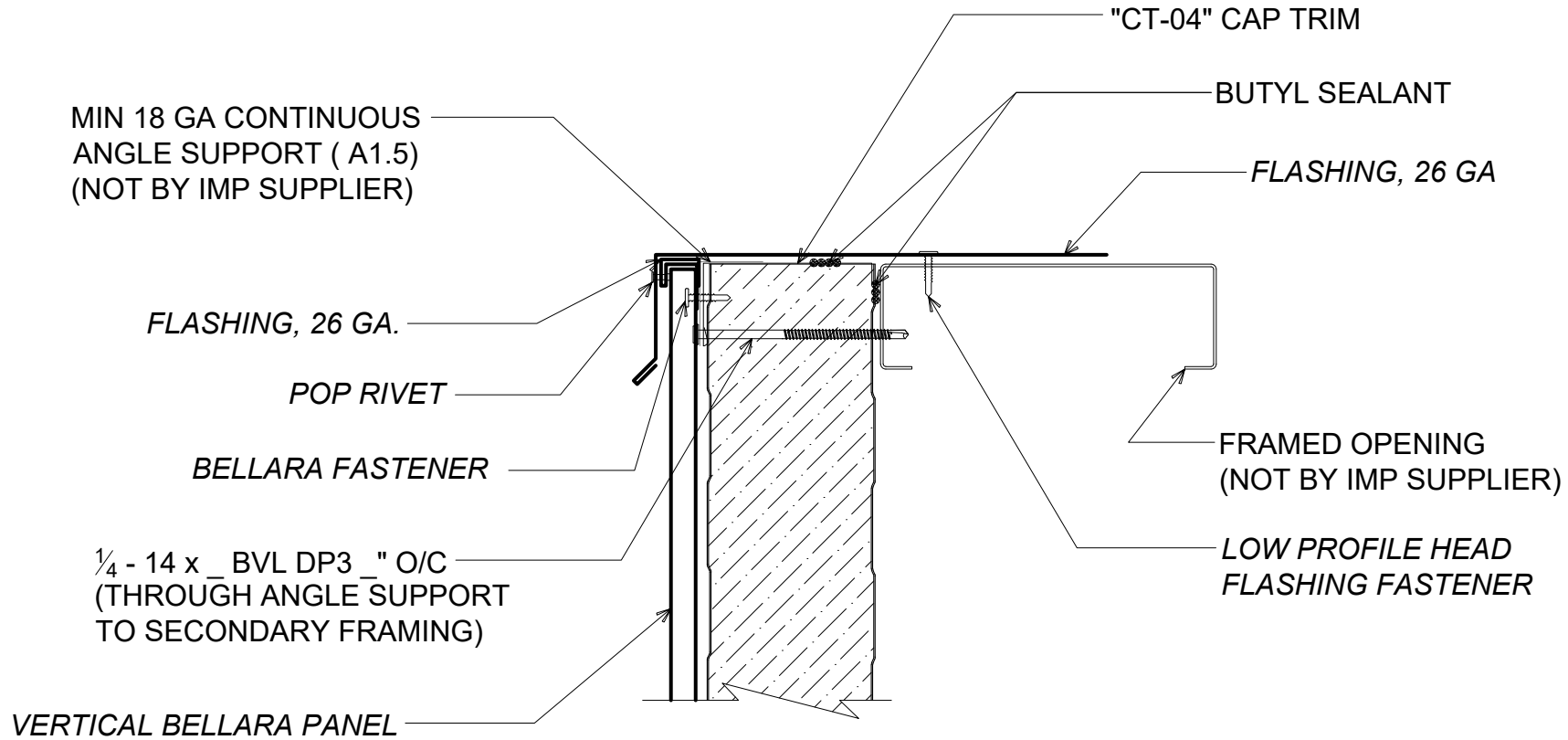
All Weather
 Insulated Panels



DATE:
10/03/24
 DRAWN BY:
JB/MMF

SHEET:
1 OF 1

NOTE: REFER TO AWIP BELLARA DESIGN GUIDE FOR INSTALLATION OF BELLARA PROFILES.



FRAMED OPENING - SILL

(SECTION VIEW)

DETAIL:

FRAMED OPENING - SILL

APPLICATION:
 FASSADE: HORIZONTAL IMP, VERTICAL BELLARA
 AWIP DETAIL NUMBER:
 FAS-ACL-FO-012

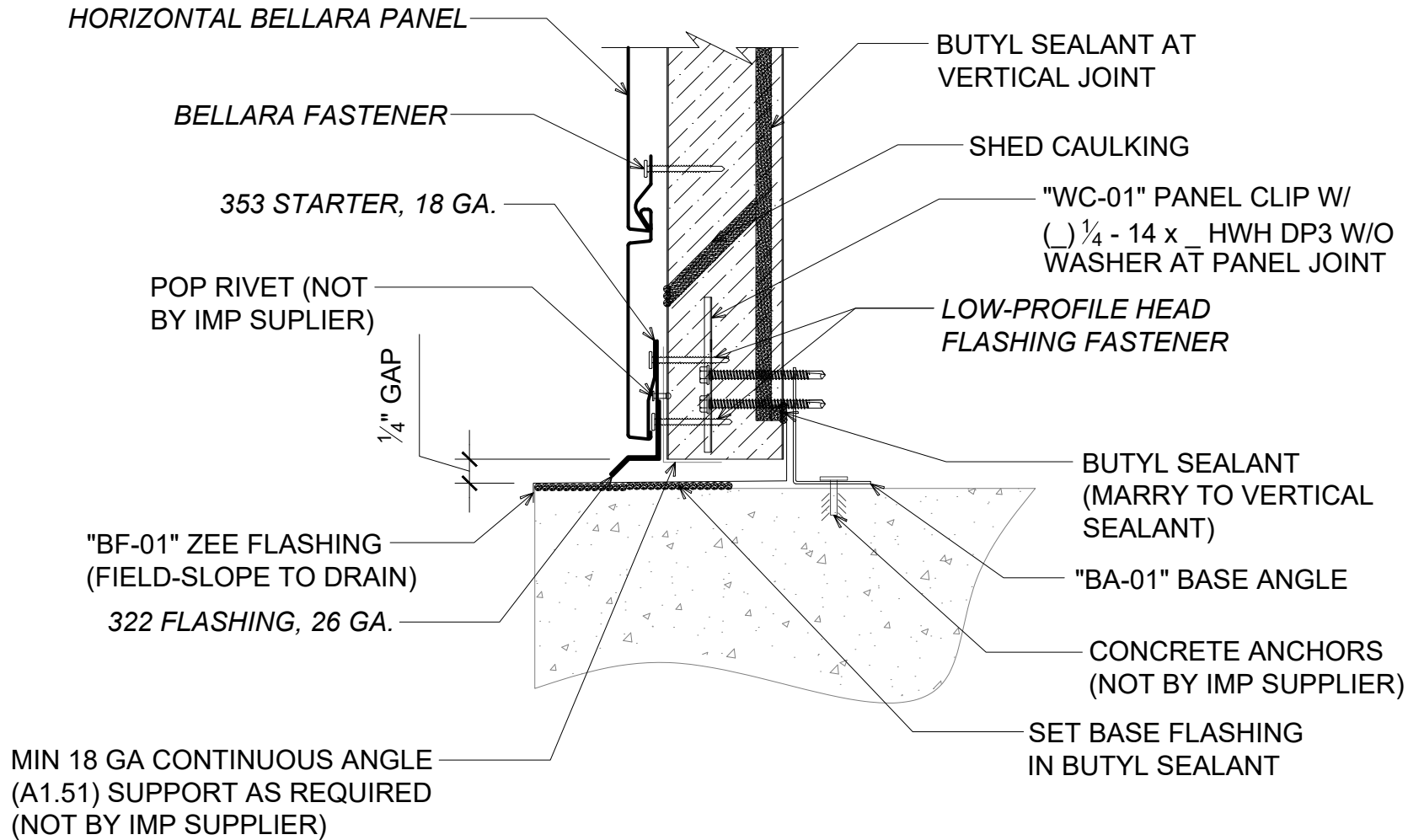
DATE:
 10/03/24
 DRAWN BY:
 JB/MMF

SHEET:
 1 OF 1

929 ALDRIDGE ROAD
 VACAVILLE, CA 95688
 TEL: (707) 359-2280
 FAX: (707) 359-2286
 WWW.AWIPANELS.COM



NOTE: REFER TO AWIP BELLARA DESIGN GUIDE FOR INSTALLATION OF BELLARA PROFILES.



BASE CONDITION - FLUSH

(SECTION VIEW)

DETAIL:

BASE CONDITION - FLUSH

APPLICATION:

FASSADE: VERTICAL IMP. HORIZONTAL BELLARA

AWIP DETAIL NUMBER:

FAS-ACL-BC-001

929 ALDRIDGE ROAD
VACAVILLE, CA 95688
TEL: (707) 359-2280
FAX: (707) 359-2286
WWW.AWIPANELS.COM

All Weather
Insulated Panels



DATE:

10/03/24

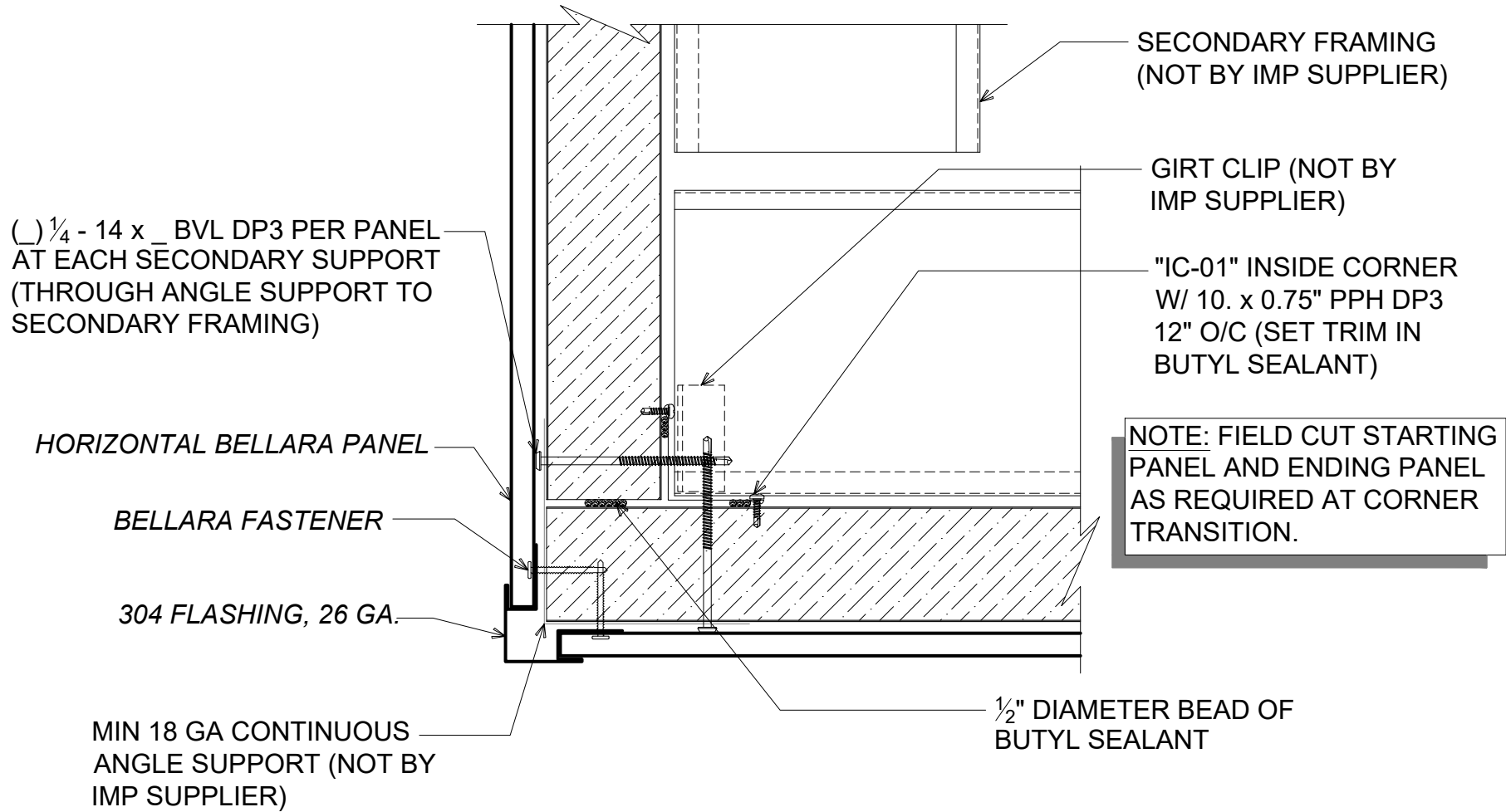
SHEET:

DRAWN BY:

JB/MMF

1 OF 1

NOTE: REFER TO AWIP BELLARA DESIGN GUIDE FOR INSTALLATION OF BELLARA PROFILES.



CORNER TRANSITION - OUTSIDE

(PLAN VIEW)

DETAIL: CORNER TRANSITION - OUTSIDE

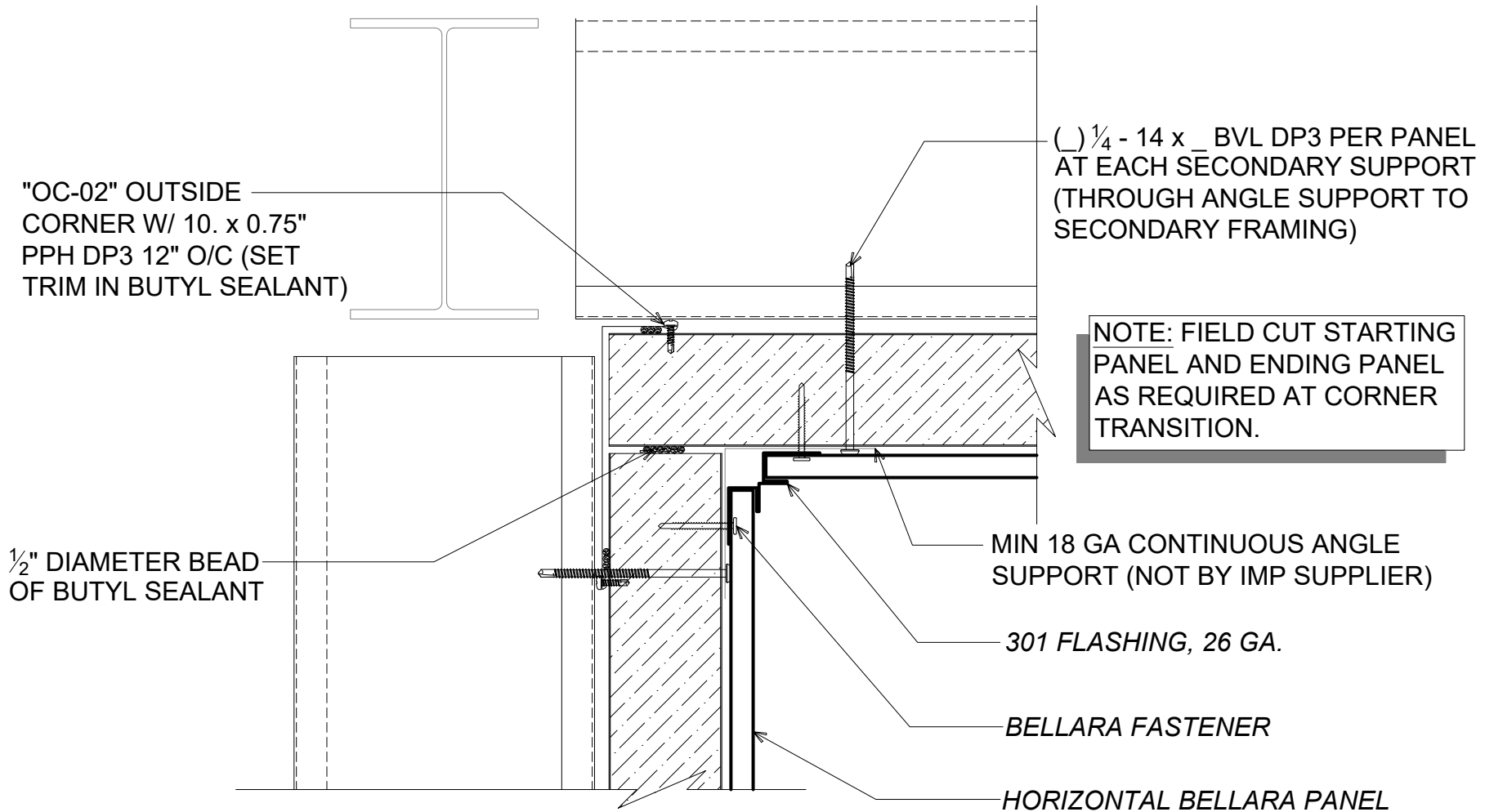
DATE:	10/03/24	SHEET:	1	OF	1
DRAWN BY:	JB/MMF				
APPLICATION: FASSADE: VERTICAL IMP. HORIZONTAL BELLARA					
AWIP DETAIL NUMBER: FAS-ACL-OC-001					

929 ALDRIDGE ROAD
 VACAVILLE, CA 95688
 TEL: (707) 359-2280
 FAX: (707) 359-2286
 WWW.AWIPANELS.COM

All Weather
 Insulated Panels



NOTE: REFER TO AWIP BELLARA DESIGN GUIDE FOR INSTALLATION OF BELLARA PROFILES.

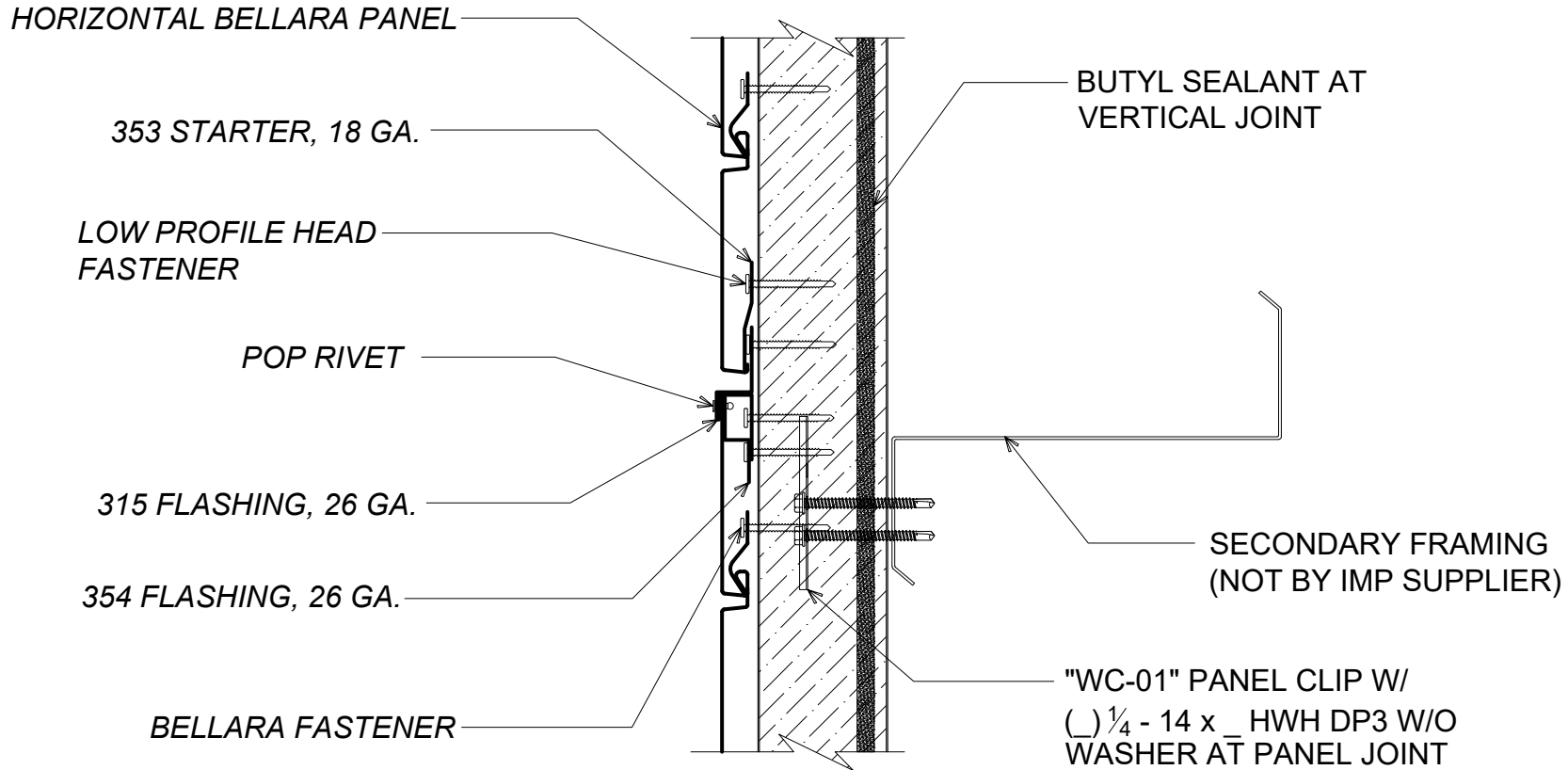


CORNER TRANSITION - INSIDE

(PLAN VIEW)

DETAIL: CORNER TRANSITION - INSIDE	DATE:	10/03/24	SHEET:	1	OF	1
	DRAWN BY:	JB/MMF				
APPLICATION: FASSADE: VERTICAL IMP. HORIZONTAL BELLARA						
AWIP DETAIL NUMBER: FAS-ACH-C-001						
<p>929 ALDRIDGE ROAD VACAVILLE, CA 95688 TEL: (707) 359-2280 FAX: (707) 359-2286 WWW.AWIPANELS.COM</p> <p>All Weather Insulated Panels</p> <p>AWIP</p>						

NOTE: REFER TO AWIP BELLARA DESIGN GUIDE FOR INSTALLATION OF BELLARA PROFILES.



HORIZONTAL TRANSITION
(BELLARA CLADDING)
(SECTION VIEW)

DETAIL:

HORIZONTAL TRANSITION

APPLICATION:
FACSADE: VERTICAL IMP. HORIZONTAL BELLARA
AWIP DETAIL NUMBER:
FAS-ACHPT-001

DATE:
10/03/24
DRAWN BY:
JB/MMF

SHEET:
1 OF 1

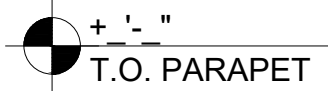
929 ALDRIDGE ROAD
VACAVILLE, CA 95688
TEL: (707) 359-2280
FAX: (707) 359-2286
WWW.AWIPANELS.COM



NOTE: REFER TO AWIP BELLARA DESIGN GUIDE FOR INSTALLATION OF BELLARA PROFILES.

MIN 18 GA CONTINUOUS ANGLE (A1.5) SUPPORT AS REQUIRED (NOT BY IMP SUPPLIER)

313 FLASHING, 26 GA.



POP RIVET

LOW-PROFILE HEAD FLASHING FASTENER

354 FLASHING, 26 GA.

BELLARA FASTENER

HORIZONTAL BELLARA PANEL

BUTYL SEALANT AT VERTICAL JOINT

"CT-04" CAP TRIM W/ POP RIVETS 12" O/C

PANEL CLOSURES (NOT BY IMP SUPPLIER)

PARAPET CAP TRIM & ALL ACCESSORIES BY OTHERS (NOT BY IMP SUPPLIER)

BUTYL SEALANT (MARRY TO VERTICAL SEALANT)

"WC-01" PANEL CLIP W/ () 1/4 - 14 x HWH DP3 W/O WASHER AT PANEL JOINT

BACK SHEETING (NOT BY IMP SUPPLIER)

END POST OR FACADE POST (NOT BY IMP SUPPLIER)

PARAPET WALL

(SECTION VIEW)

DETAIL:

PARAPET WALL

APPLICATION:
 FASSADE: VERTICAL IMP. HORIZONTAL BELLARA
 AWIP DETAIL NUMBER:
 FAS-ACI-PW-001

929 ALDRIDGE ROAD
 VACAVILLE, CA 95688
 TEL: (707) 359-2280
 FAX: (707) 359-2286
 WWW.AWIPANELS.COM

All Weather
 Insulated Panels



SHEET:

DATE:

DRAWN BY:

JB/MMF

10/03/24

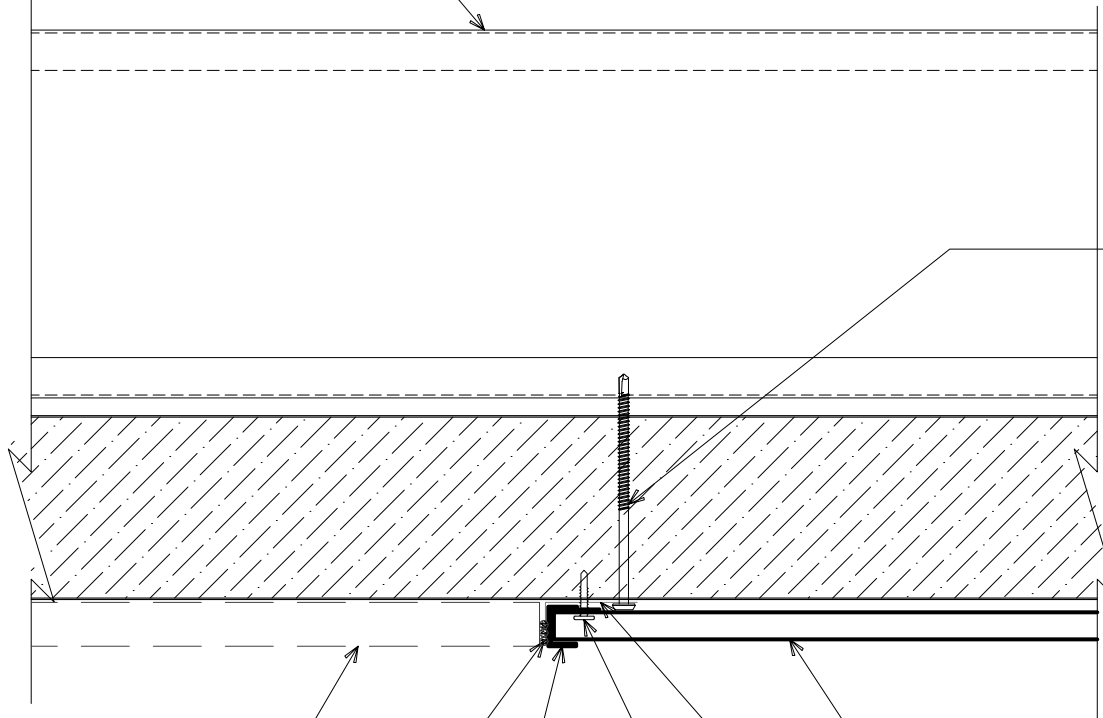
1

OF

1

SECONDARY FRAMING
(NOT BY IMP SUPPLIER)

NOTE: REFER TO AWIP BELLARA DESIGN GUIDE
FOR INSTALLATION OF BELLARA PROFILES.



() 1/4 - 14 x _ BVL DP3 PER PANEL
AT EACH SECONDARY SUPPORT
(THROUGH ANGLE SUPPORT TO
SECONDARY FRAMING)

NOTE: LEFT TO RIGHT
BELLARA INSTALLATION.

WALL BY OTHERS
(NOT BY IMP SUPPLIER)

HORIZONTAL BELLARA PANEL

SEALANT BY OTHERS
(NOT BY IMP SUPPLIER)

MIN. 18 GA CONTINUOUS
ANGLE (A0.5) SUPPORT
(NOT BY IMP SUPPLIER)

313 FLASHING, 26 GA.

BELLARA FASTENER

TERMINATION (BELLARA CLADDING)

(PLAN VIEW)

DETAIL:

TERMINATION

APPLICATION:
FACSADE: VERTICAL IMP. HORIZONTAL BELLARA
AWIP DETAIL NUMBER:
FAS-ACHPT-002

929 ALDRIDGE ROAD
VACAVILLE, CA 95688
TEL: (707) 359-2280
FAX: (707) 359-2286
WWW.AWIPANELS.COM

All Weather
Insulated Panels



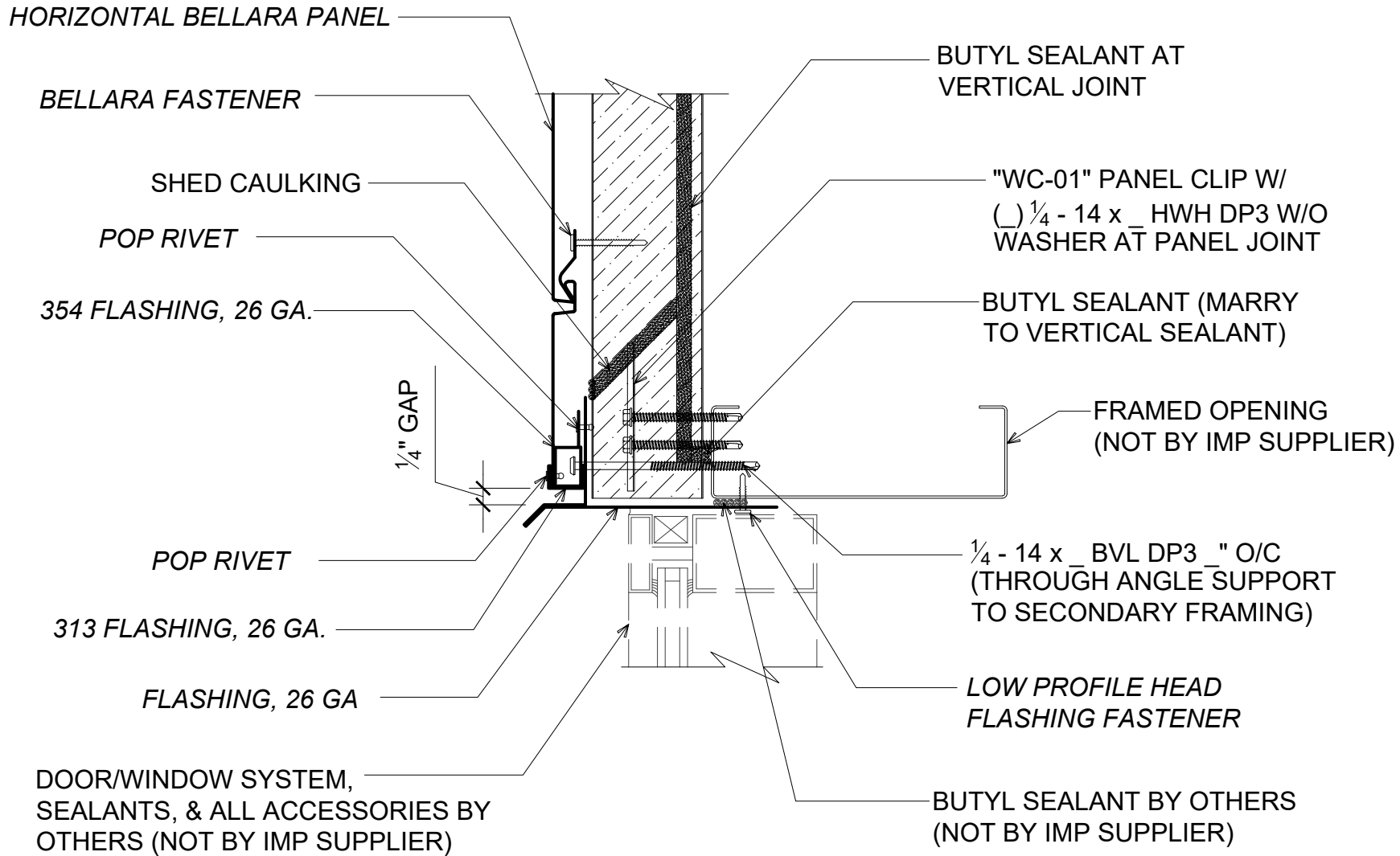
SHEET:

DATE:
10/03/24

DRAWN BY:
JB/MMF

1 OF 1

NOTE: REFER TO AWIP BELLARA DESIGN GUIDE FOR INSTALLATION OF BELLARA PROFILES.



FRAMED OPENING - HEADER

(SECTION VIEW)

DETAIL: **FRAMED OPENING - HEADER**

929 ALDRIDGE ROAD
VACAVILLE, CA 95688
TEL: (707) 359-2280
FAX: (707) 359-2286
WWW.AWIPANELS.COM

All Weather
Insulated Panels

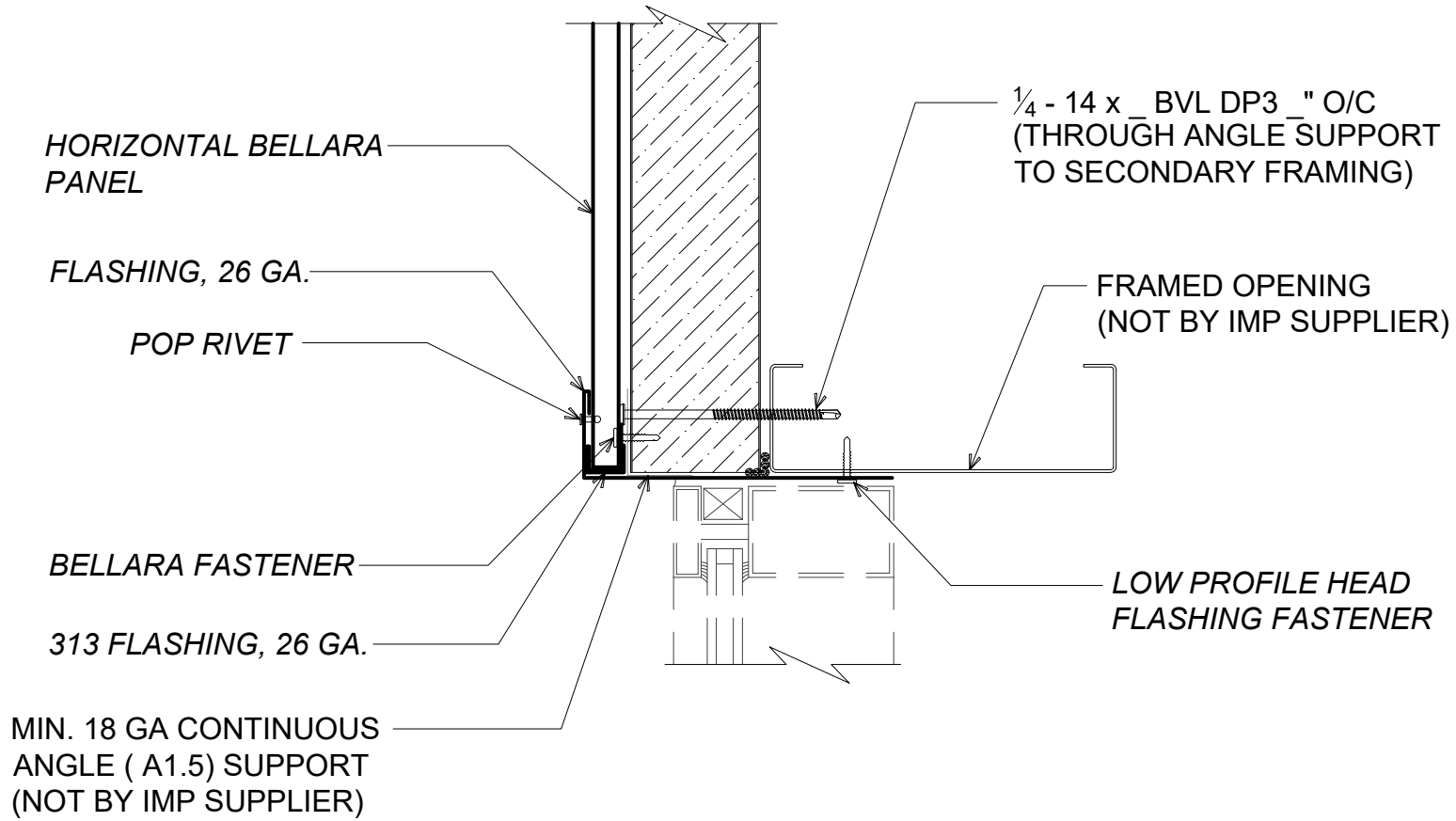


APPLICATION:
FASADE: VERTICAL IMP. HORIZONTAL BELLARA
AWIP DETAIL NUMBER:
FAS-ACL-FC-001

DATE:
10/03/24
DRAWN BY:
JB/MMF

SHEET:
1 OF 1

NOTE: REFER TO AWIP BELLARA DESIGN GUIDE FOR INSTALLATION OF BELLARA PROFILES.



FRAMED OPENING - JAMB

(PLAN VIEW)

DETAIL:

FRAMED OPENING - JAMB

APPLICATION:

FASSADE: VERTICAL IMP. HORIZONTAL BELLARA

AWIP DETAIL NUMBER:

FAS-ACL-FO-002

DATE:

10/03/24

DRAWN BY:

JB/MMF

SHEET:

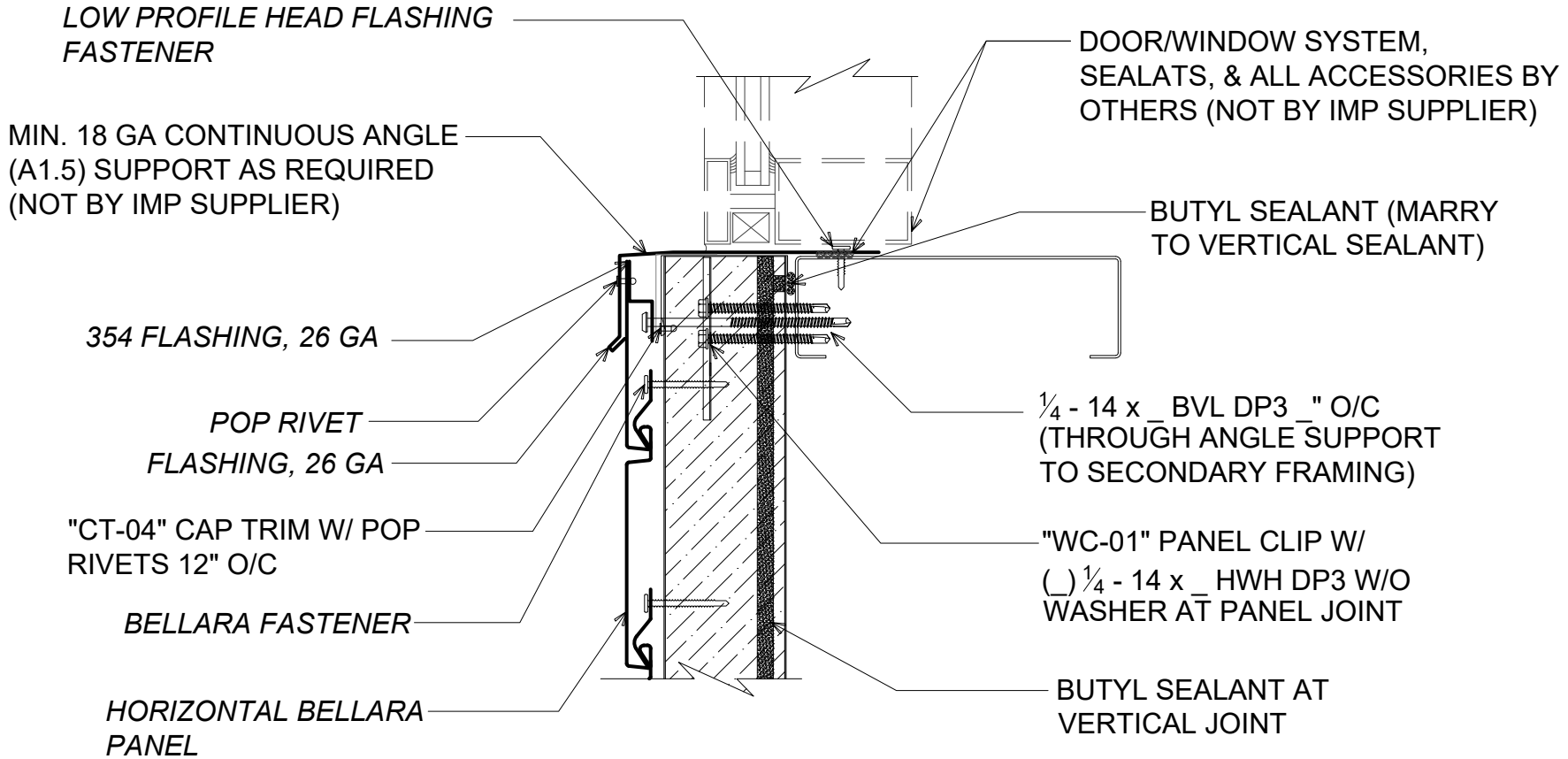
1 OF 1

929 ALDRIDGE ROAD
 VACAVILLE, CA 95688
 TEL: (707) 359-2280
 FAX: (707) 359-2286
 WWW.AWIPANELS.COM

All Weather
 Insulated Panels



NOTE: REFER TO AWIP BELLARA DESIGN GUIDE FOR INSTALLATION OF BELLARA PROFILES.



FRAMED OPENING - SILL

(SECTION VIEW)

DETAIL:

FRAMED OPENING - SILL

APPLICATION:

FASSADE: VERTICAL IMP. HORIZONTAL BELLARA

AWIP DETAIL NUMBER:

FAS-ACL-FC-003

DATE:

10/03/24

DRAWN BY:

JB/MMF

SHEET:

1 OF 1

929 ALDRIDGE ROAD
VACAVILLE, CA 95688
TEL: (707) 359-2280
FAX: (707) 359-2286
WWW.AWIPANELS.COM

