

# HR3-W

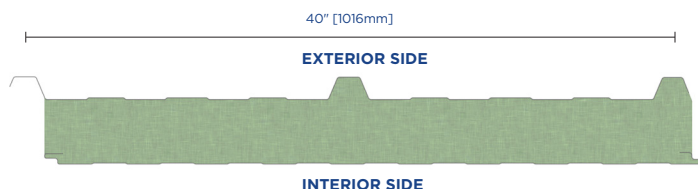
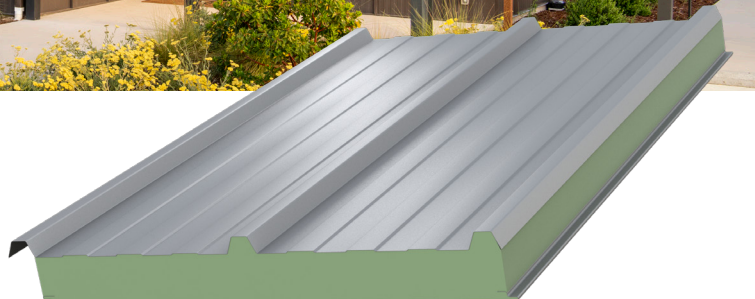
High Rib Wall Panel with InnovaCELL™ Technology

AWIP PRODUCT DATA SHEET



## Features & Benefits

- Rugged industrial aesthetic and faster installation achieved with exposed through fasteners
- Weathertight design for use in both retrofit or new construction applications
- Composite panel simplifies design, reduces complexity, improves efficiency and reduces installation costs
- Single component wall design includes exterior aesthetic, weather barrier, insulation and vapor barrier



## Product Specifications

Profile	Exterior	Smooth, Trapezoid		
	Interior	Embossed, Lightly Planked, Mesa Rib		
Exterior Face Skin	26 Gauge G90 Galvanized or AZ50 Galvalume. 24 and 22 Gauge optional			
Interior Face Skin	26 Gauge G90/AZ50, Optional Gauges: 24 and 22 G90/AZ50, 26 304 2B Stainless Steel*			
Panel Module**	40" [1016mm]			
Lengths**	Minimum: 8' [2.4m], Maximum: 40' [12.2m]			
Side Lap	Exterior: Trapezoidal Overlap      Interior: Shiplap			
GWP	Available Upon Request			
Core Type	InnovaCELL Technology			
Thermal Performance <sup>†</sup>				
Thickness	1.5" [38mm]	2.5" [64mm]	3" [76mm]	4" [102mm]
R-Value @ 75°F mean (°F·ft <sup>2</sup> ·h/BTU)	12	20	24	32
U-Value @ 75°F mean (BTU/°F·ft <sup>2</sup> ·h)‡	0.089	0.054	0.046	0.035
R-Value @ 35°F mean (°F·ft <sup>2</sup> ·h/BTU)	12.75	21.25	25.5	34
U-Value @ 35°F mean (BTU/°F·ft <sup>2</sup> ·h)‡	0.083	0.050	0.042	0.032

\* For interior applications only

\*\* Contact AWIP for Custom Sizes

† R-values as tested per ASTM C518

‡ U-values as tested per ASTM C1363

InnovaCELL™

## Testing & Approvals

Category	Test	Test Title	Results
Fire	ASTM E84	Surface Burning Characteristics of Building Materials	Flame Spread Index: 25 or less Smoke Developed Index: 450 or less
	NFPA 285	Evaluation of Fire Propagation Characteristics of Exterior Non-Load Bearing Wall Assemblies	Passed
	NFPA 286	Room Fire Growth for Wall and Ceiling Interior	Passed
	NFPA 268	Standard Test Method for Determining Ignitability of Exterior Wall Assemblies Using a Radiant Heat Energy Source	Assembly tested meets the requirements of the standard
Water Penetration	ASTM E331	Water Penetration of Exterior Windows, Skylights, Doors and Curtain Walls by Uniform Static Air Pressure Difference	No uncontrolled water penetration at 6.24 PSF differential pressure for a duration of 2-hours
Air Infiltration	ASTM E283	Rate of Air Leakage Through Exterior Windows, Curtain Walls, and Doors	<0.03 CFM/ft <sup>2</sup> of Panel Area inclusive of stack joint at 6.24 PSF
Structural	ASTM E1592	Structural Performance for Sheet Metal and Sidings Systems by Uniform Static Air Pressure Difference	See Span Tables
Thermal	ASTM C518	Steady-State Thermal Transmission	Nominal R-value of 8.0 [hr·ft <sup>2</sup> ·°F/Btu] per inch at 75°F mean temperature and 8.5 [hr·ft <sup>2</sup> ·°F/Btu] per inch at 35°F mean temperature
	ASTM C1363	Thermal Performance of Building Materials and Envelope Assemblies by Means of a Hot Box Apparatus	U-values are tested with 2" and 4" thicknesses. U-values for other thicknesses are interpolated. See U-values in the table on page 1



Scan for the most current  
product information

1 (888) 970-AWIP (2947)  
awipanel.com  
sales@awipanel.com



**All Weather**  
Insulated Panels