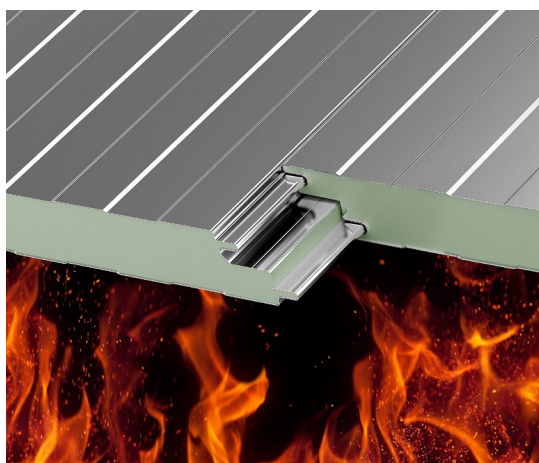
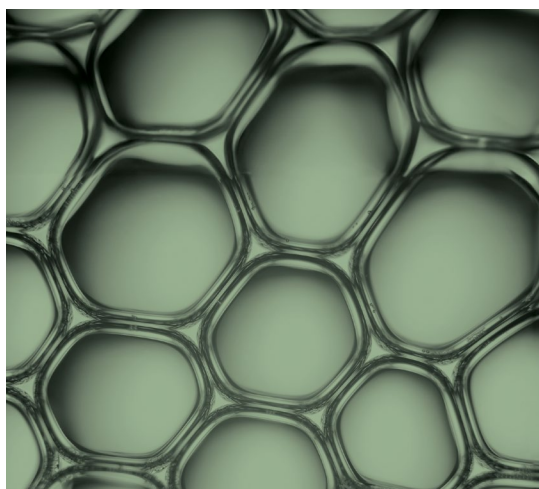


Better Performance Starts At The Cellular Level




Your vision. Our purpose.




Discover How Our Next-Generation Foam System Elevates Your Building Projects

Engineered for enhanced thermal efficiency, advanced fire protection, and forward-thinking sustainability, our new InnovaCELL™ technology is redefining the future of insulated metal panels.




Increased Thermal Insulation

Achieve an R-value of R-8.0 per inch, a significant advancement in thermal performance that contributes to more energy-efficient building envelopes.




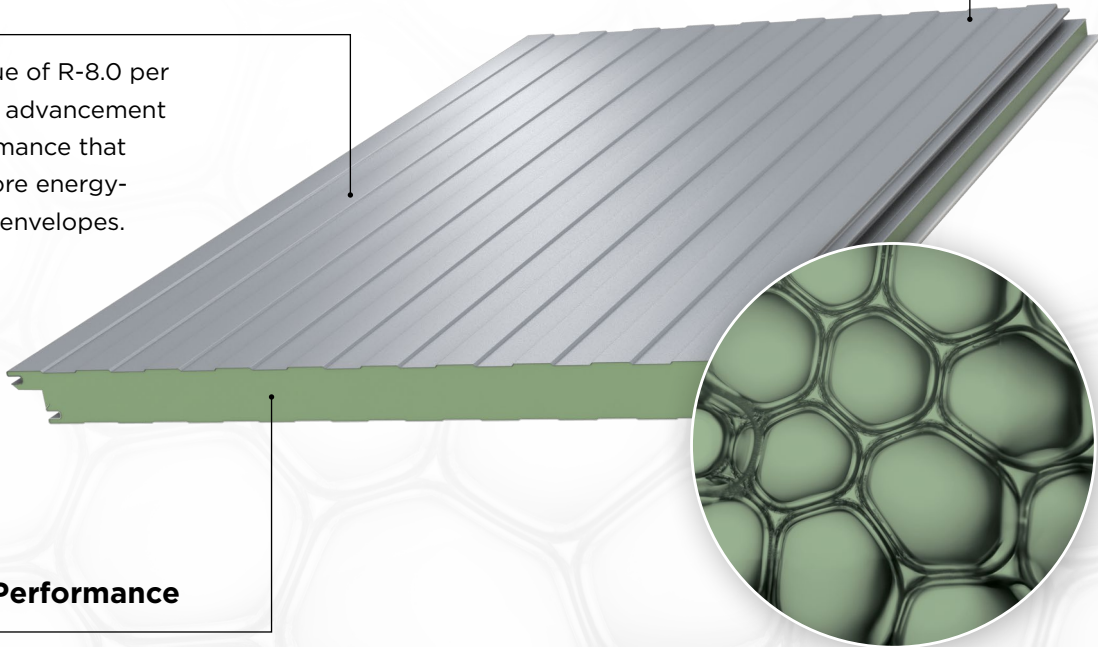
Sustainable Design

Engineered with recycled material in the foam and lower embodied carbon, InnovaCELL supports your project's sustainability goals with a long lifespan and environmental benefits.



Certified Fire Performance

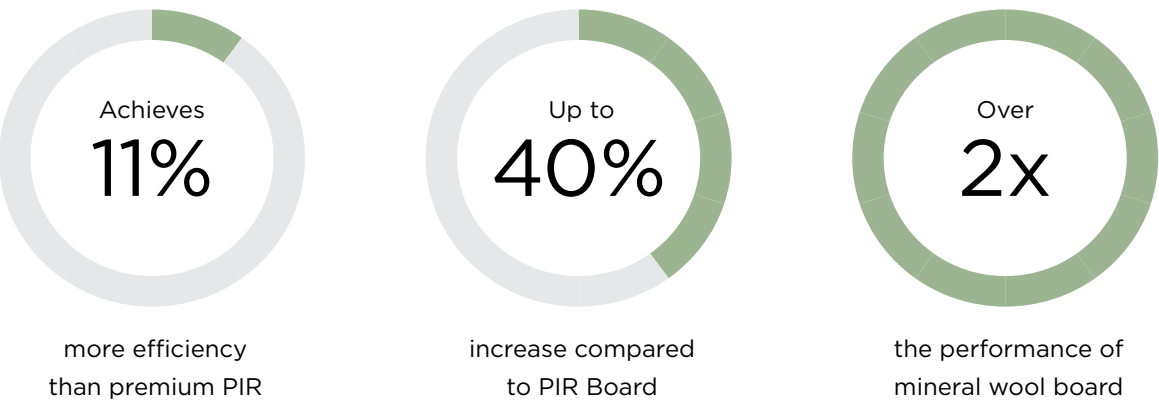
InnovaCELL products are engineered to meet stringent fire safety standards, including FM 4882 for smoke-sensitive occupancies, offering enhanced protection and peace of mind.



Enhanced Thermal Efficiency

A significant step forward for modern buildings

InnovaCELL technology achieves an R-value of R-8.0 per inch, certifying it as a leading thermally efficient closed-cell insulation core. This superior performance is integral to the development of modern, energy-optimized building designs.



Thermal resistance comparison assumes the same thickness of insulation material. Performance is tested at a 75-degree mean temperature.

Driving Energy Reduction

An envelope-first design that incorporates the high R-value characteristics of InnovaCELL is instrumental in minimizing HVAC system capacity. This translates to reductions in energy expenditure and associated carbon emissions while contributing to the development of highly efficient, future-ready structures.

In addition, our panels are tested in accordance with ASTM C1363, providing comprehensive U-factor data for the entire assembly including panel joints and ensuring predictable, real-world performance.

Advanced Fire Protection

Innovative material design for enhanced fire performance and safety

InnovaCELL is specifically formulated to achieve low smoke generation and limited flame spread under relevant test standards, setting a new benchmark for fire safety in insulated metal panels.

Meets

FM 4882

standard demonstration exception fire performance, while its low smoke emission characteristics enhance occupant safety and product loss during a fire event

Up to

73% lower

smoke developed index (ASTM E84) than the building code requirement

Improved Fire Performance Ratings

Key performance attributes include a reduced flame spread, less heat released during a fire event, and significantly lower smoke output. These metrics establish IMPs with InnovaCELL technology as a preferred solution over conventional panels.

Approved

Class 1

fire rating in accordance with FM 4880

Achieves

1-hour

fire performance rating in certain configurations

Technical Data & Specifications

Product Specifications

Core Density	2.0-2.5 PCF
R-Value	8.0 per inch at 75 degree mean
	8.5 per inch at 35 degree mean
Smoke Developed Index	120
Compressive Strength	17.5 psi

Thermal Resistance Comparison

Type	R-Value	Notes
AWIP InnovaCELL Panels	R-8.0 per inch	Up to 40% better thermal resistance
AWIP PIR Panels	R-7.2 per inch	Up to 26% better thermal resistance
Polyiso Board (PIR)	R-5.7 per inch	Reference Point Polyiso Board (PIR)
Extruded Polystyrene (XPS)	R-5.0 per inch	Up to 12% less thermal resistance
Expanded Polystyrene (EPS)	R-4.3 per inch	Up to 25% less thermal resistance
Mineral Wool Board	R-3.8 per inch	Up to 33% less thermal resistance

* PIR/XPS/EPS/Mineral Wool Board R-values taken from PIMA Technical Bulletin #203 4/2022

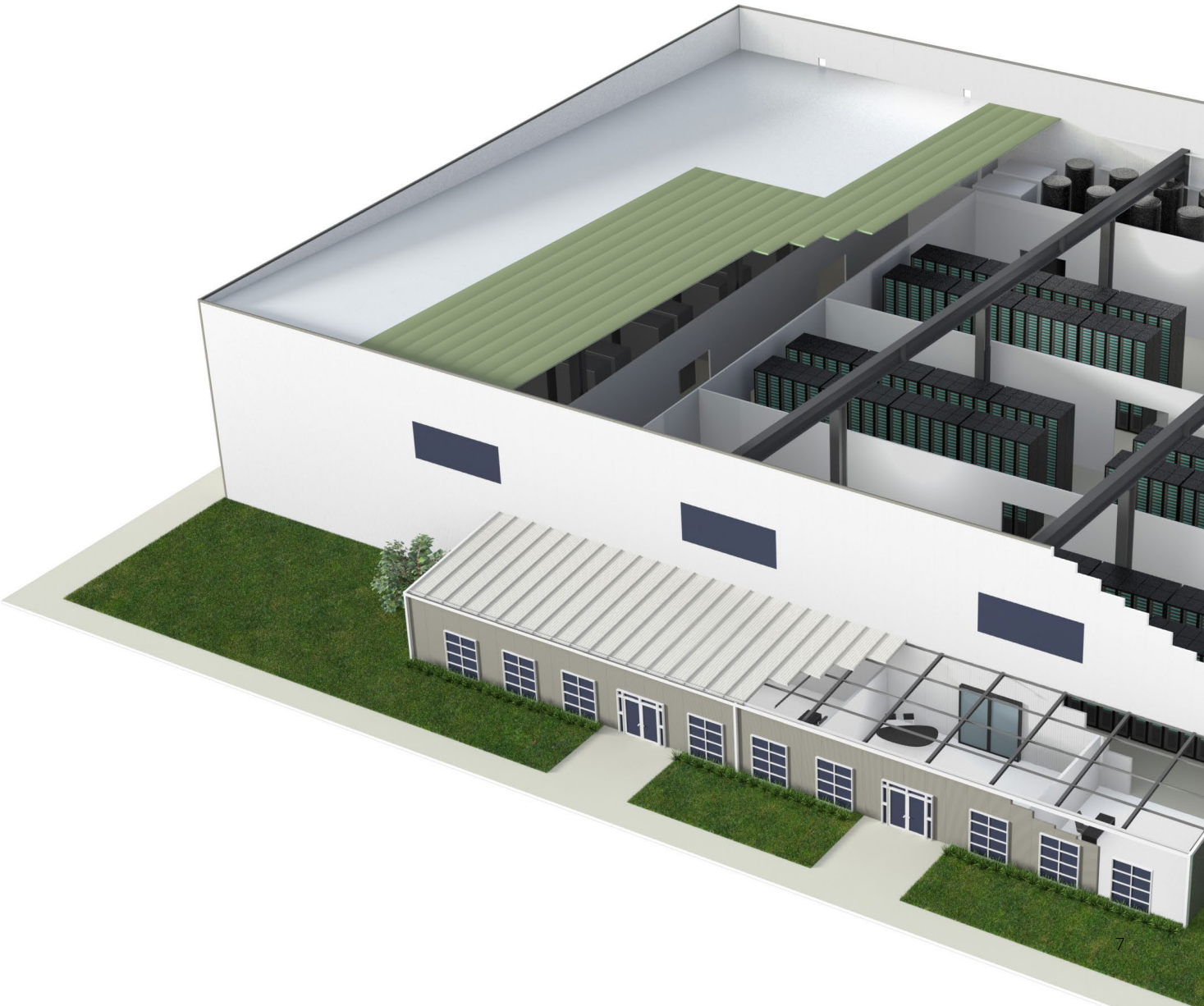
* Thermal resistance comparison of each product is based against polyiso board at R-5.7.

* Thermal resistance R-values based on 75 degree F mean.

Technical Data & Specifications

Tested & Certified to Meet Fire Performance Standards

NFPA 285	FM 4880	FM 4882	ASTM E119
Passed for vertical & horizontal installation	Certified as Class 1 foam system	Certified for smoke-sensitive occupancies	First foam system to achieve 1-hour rating



InnovaCELL™ Technology

Learn more about how InnovaCELL can expand the potential of your insulated panel systems to meet your project's performance and sustainability goals.

Explore InnovaCELL at **AWIPanel.com/InnovaCELL**



All Weather
Insulated Panels

1 (888) 970-AWIP (2947)
awipanel.com
sales@awipanel.com



Scan for the most current
product information



In accordance with ongoing efforts to improve our products and their performance, All Weather Insulated Panels reserves the right to change without notice the specifications contained herein. The contents herein are for general information and illustrative purposes only and are not intended to serve as any type of advice. Every effort is made to ensure the accuracy of the information included in this brochure and it is believed that the information contained herein is accurate and reliable as of the date of this publication. All Weather Insulated Panels does not warrant or represent the accuracy or reliability of any information included in this collateral. Any reliance of any information without consultation with All Weather Insulated Panels or a duly authorized representative shall be at the user's own risk. Copyright 2025 All Weather Insulated Panels—All rights reserved.